



4 Coolum Court Regents Park QLD

4 2 2

Nestled in a serene cul-de-sac, this meticulously maintained property offers a perfect blend of comfort and convenience. With four spacious bedrooms and two well-appointed bathrooms, this home is designed for both families and investors alike. The generous living areas provide ample space for relaxation and entertainment, making it an inviting sanctuary for all who enter.

Set on a substantial 609m² block, this property boasts a double lock-up garage, ensuring that your vehicles are secure while providing additional storage space. The backyard offers plenty of room for outdoor activities or future landscaping projects, creating endless possibilities to enhance your living experience. This well-looked-after home reflects pride of ownership, making it a truly attractive

[For full version visit the website](https://www.eresidential.com.au)

Type	: House
Price	: New to Market
Building Size	: 148 sqm
Land Size	: 609 sqm
View	: https://www.eresidential.com.au/817326



Welly Cendana
07 3521 5478

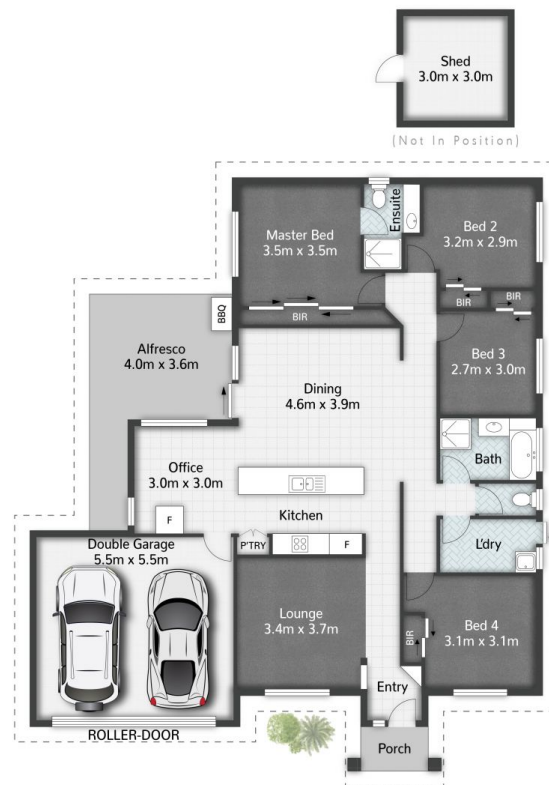


Gus Tuxworth-Holden
07 3521 5478



Gus Tuxworth-Holden | 0433 702 598
gus.tuxworth-holden@eresidential.com.au

Welly Cendana | 0414 768 599
welly@eresidential.com.au



4 Coolum Court **REGENTS PARK**

4 Beds | 2 Bathrooms | 2 Car Spaces | 186m² | 609m²

All dimensions are approximate; they are subject to errors and inaccuracies and no liability will be accepted.
Plans are shown for marketing purposes only.

eresidential
honesty. integrity. family.