



603/21 Duncan Street West End QLD

1 1 1

With one caring owner-occupier since new, this unit is simply immaculate. From entry, you instantly appreciate the expansive living area, which in turn seamlessly opens onto the large private balcony, affording a limited but pleasant view of the Brisbane river. The rooftop view is quite spectacular, with the area featuring gardens, an affinity pool, sauna, 2 separate BBQ sections and disability lift.

Features:

Spacious open plan living area with high set ceilings
Large private balcony with screens and providing partial view of the Brisbane river
Half island stone kitchen benchtop with double basins, Smeg gas stove and dishwasher, ample bench/cupboard space and soft close drawers

[For full version visit the website](https://www.eresidential.com.au)

Type	: Unit
Price	: New to Market!!
Building Size	: 60 sqm
View	: https://www.eresidential.com.au/8125827



Welly Cendana
07 3521 5478

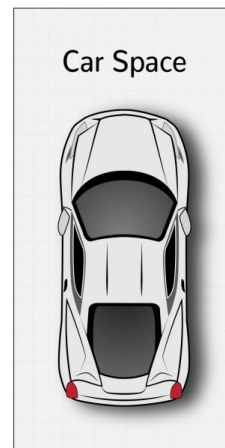
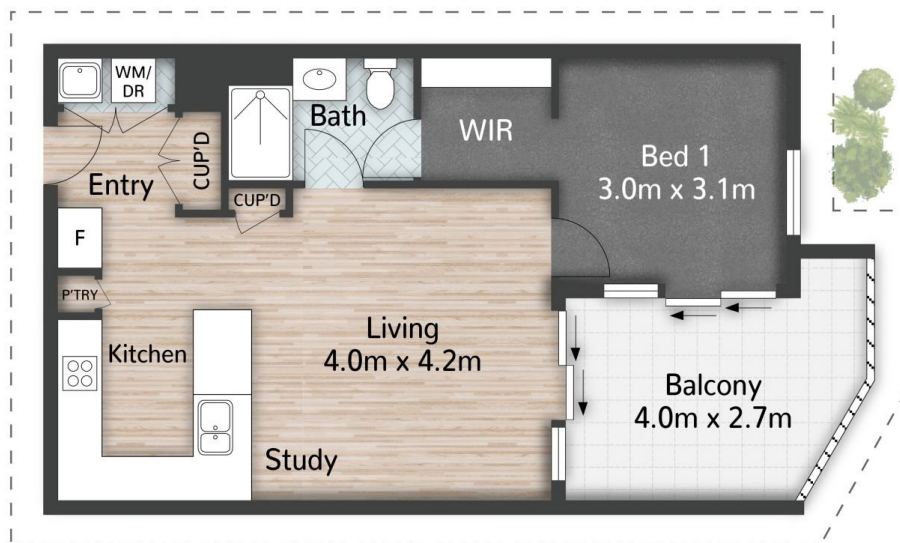


Peter Palmer
07 3521 5478



Peter Palmer | 0451 892 598
peter.palmer@eresidential.com.au

Welly Cendana | 0414 768 599
welly@eresidential.com.au



(Not In Position)



603/21 Duncan Street **WEST END**

Bed 1 | Kitchen 1 | Car 1 | House 60m² | 2948m²

All dimensions are approximate; they are subject to errors and inaccuracies and no liability will be accepted.
Plans are shown for marketing purposes only.

eresidential
honesty. integrity. family.