



61 Timothy Crescent Rosewood QLD

4 2 2

Positioned in a lovely street, this near new home offers a great family lifestyle with a modern kitchen, open plan living area, and a large backyard located just minutes from shops, parks, schools, and within a short drive from major amenities.

As you approach the property, you will appreciate the quiet family friendly neighbourhood with quality homes and established gardens. Inside, the spacious living area is light and airy with warm neutral colours and plenty of natural light.

The stylish kitchen boasts stone benchtops, a 900mm wide gas cooktop, ample cabinetry, walk-in pantry, and a large peninsula with room for seating. Entertaining family and

Type : House
Building Size : 159 sqm
Land Size : 620 sqm
View : <https://www.eresidential.com.au/8098409>



Welly Cendana
07 3521 5478

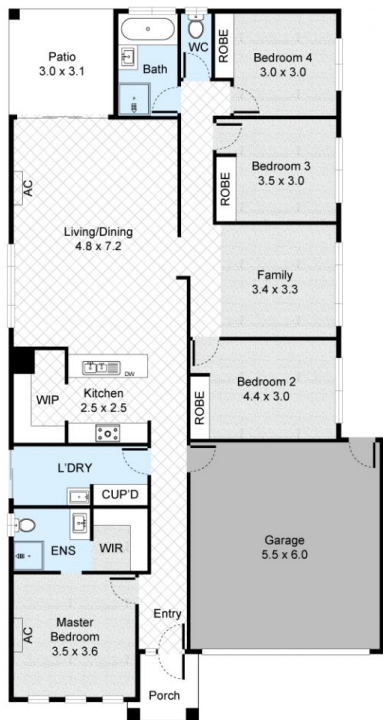


Sandra Devi
07 3521 5478

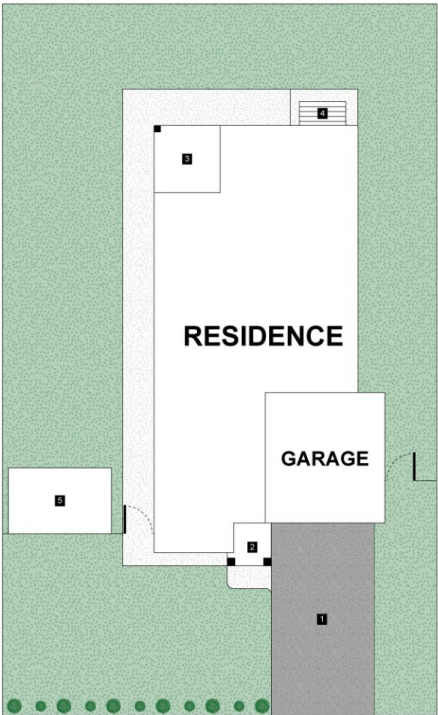
[For full version visit the website](https://www.eresidential.com.au)

61 Timothy Crescent, Rosewood

4 Bed 2 Bath 2 Car



FLOOR PLAN



SITE PLAN

LEGEND

- 1. Driveway
- 2. Porch
- 3. Patio
- 4. Clothes Line
- 5. Shed

Internal : 177m²
External : 9m²



All information contained herein is gathered by Little Hinges. Whilst the scanning technology is highly reliable, we cannot guarantee its accuracy and interested parties should rely on their own enquiries.