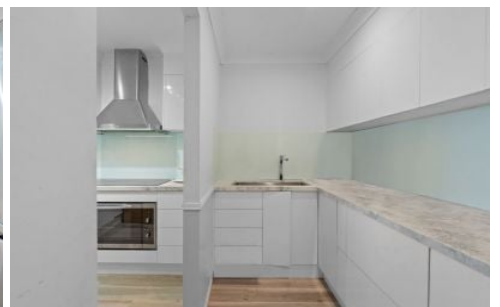




Boundaries and dimensions are approximate only. Interested parties should conduct their own independent enquiries.



**12 Cornell Close Regents Park QLD**

5 3 2

This well presented home offers an ideal family lifestyle with numerous living zones, elevated views, an outdoor entertaining area and space for the whole family - set on an 623m2 parcel of land in a prestigious part of the Regents Park neighbourhood, walking distance from the local schools.

**Price** : Offers over \$950,000  
**Building Size** : 283 sqm  
**Land Size** : 623 sqm  
**View** : <https://www.eresidential.com.au/8022092>

As you approach the home, the grand double-storey front elevation with a gorgeous front garden space hints at what else this home has to offer. Head through to the open living area with plenty of space for the whole family.

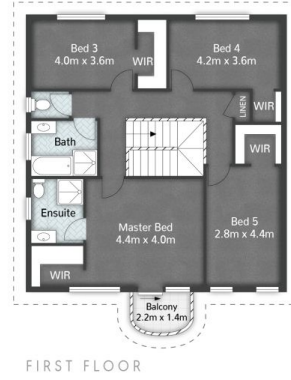
The kitchen and dining area is the heart of the home and positioned perfectly between the outdoor veranda and the rest of the living spaces. It has an abundance of cabinets, under-stair storage, plenty of bench space, and an additional nook which features an extra sink and more



**Welly Cendana**  
07 3521 5478



**Gus Tuxworth-Holden**  
07 3521 5478



12 Cornell Close **REGENTS PARK**

5 | 3 | 2 | 283m<sup>2</sup>

All dimensions are approximate; they are subject to errors and inaccuracies and no liability will be accepted. Plans are shown for marketing purposes only.

**eresidential**  
honesty, integrity, family.