



33 Burnett Drive Holmview QLD

4 2 2

Positioned in a quiet street within walking distance from numerous parks and transport, this modern family home has so much to offer with a large open plan living area, fantastic master suite, beautiful kitchen, and plenty of space to entertain.

Step inside the living area where cool neutral colours and an abundance of natural light make this feel like home. The stylish kitchen is the heart of the home and boasts quality appliances, big pantry, pendant lighting, gas stove, stone benchtops, and a large island bench with room for seating.

Sliding glass doors open up the back of the home to the covered alfresco area and low maintenance backyard; perfect when entertaining family and friends. From here, you can relax and take in tranquil elevated views across the rooftops to the south.

Price : \$ 712,000
Land Size : 313 sqm
View : <https://www.eresidential.com.au/8008359>



Robby Christanto
07 3521 5478



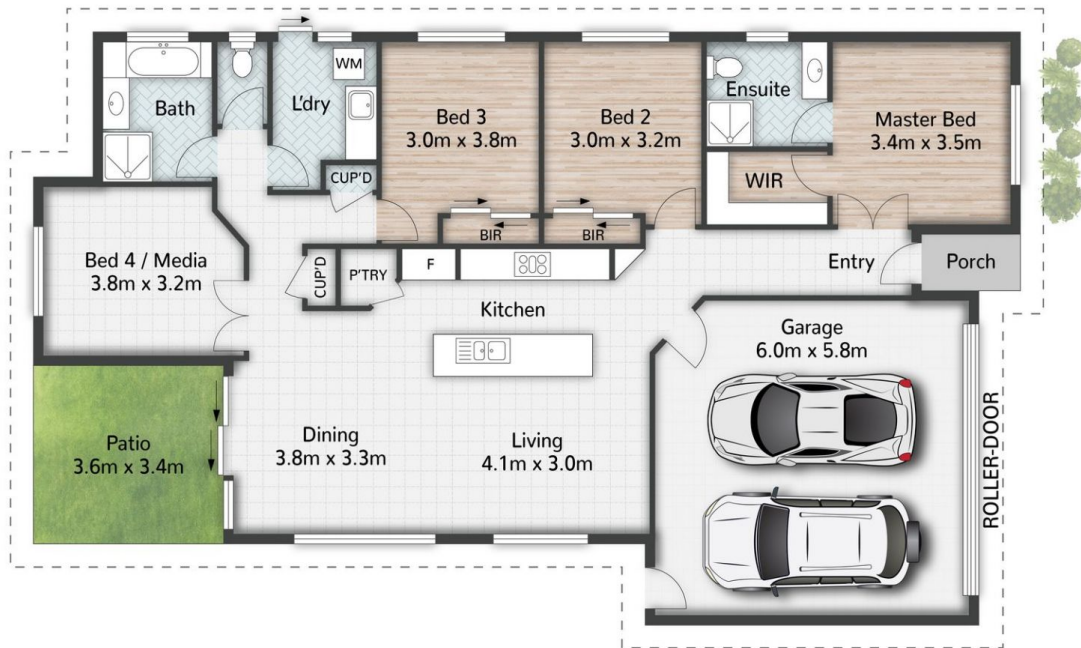
Ken Ardhiha
07 3521 5478



Robby Christanto | 0425 970 333
 robby@eresidential.com.au



Ken Ardhiha | 0420 700 533
 ken.ardhiha@eresidential.com.au



33 Burnett Drive **HOLMVIEW**

4 | 2 | 2 | 177m² | 313m²

All dimensions are approximate; they are subject to errors and inaccuracies and no liability will be accepted. Plans are shown for marketing purposes only.

eresidential
 honesty, integrity, family.