



29 Black Diamond Crescent Edens Landing QLD

4 1 2

Beautifully Renovated Home Backing onto the Reserve

Positioned in a quiet, leafy street, this property showcases superb finishes, a Hamptons style kitchen, freshly restored roof, large backyard, and bushland views from the adjacent reserve all located within walking distance from local shops and the train station.

As you approach the home, you will appreciate the serenity here with a tree lined street, the sound of birds singing, and well maintained neighbouring properties. Head inside to the main living area where modern neutral colours and light filled space welcome you in like a warm summer breeze.

The chef of the family will be very happy with this Hamptons style kitchen as it has quality appliances, a 900mm gas stove, soft closing drawers, 2pac finish, space

Price : \$ 710,000
Building Size : 186 sqm
Land Size : 630 sqm
View : <https://www.eresidential.com.au/789793>
1



Robby Christanto
07 3521 5478

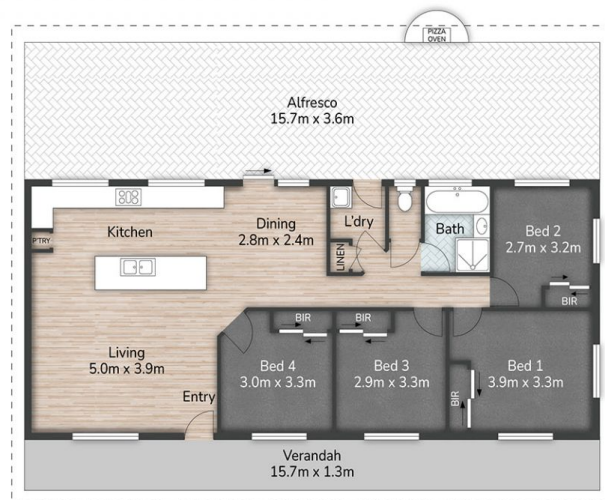


Welly Cendana
07 3521 5478



Robby Christanto | 0425 970 333
robby@eresidential.com.au

Welly Cendana | 0414 768 599
welly@eresidential.com.au



(Not In Position)



29 Black Diamond Crescent **EDENS LANDING**

4 | 1 | 2 | 186m² | 630m²

All dimensions are approximate; they are subject to errors and inaccuracies and no liability will be accepted.
Plans are shown for marketing purposes only.

eresidential
honesty. integrity. family.