



32 Sundowner Street Regents Park QLD

3 1 1

Situated on an elevated 603m² block with picturesque, low maintenance gardens, it is located within close proximity to major shops, schools, public transport and parklands.

Type : House
Land Size : 603 sqm
View : <https://www.eresidential.com.au/7806186>

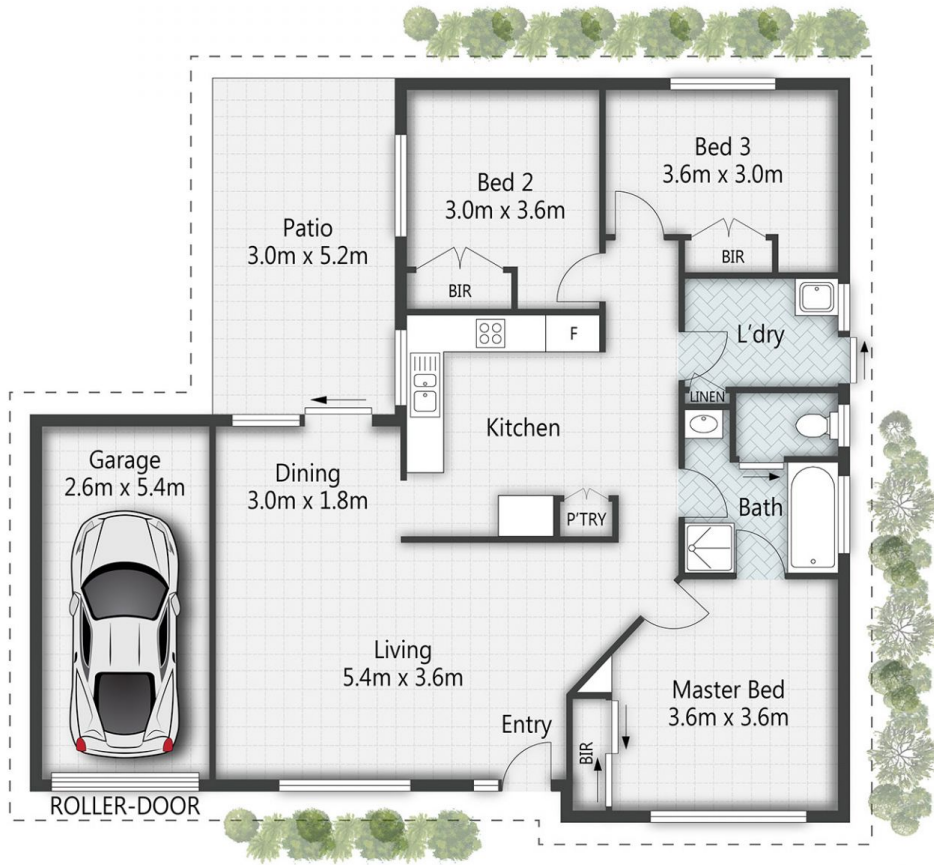
Property features includes:

- Well-sized open lounge/dining areas
- 3 bedrooms
- Master bedroom having built-in wardrobes
- 2 bedrooms with freestanding wardrobes
- Spacious kitchen with double door pantry, electric stove, large fridge space, ample cupboard and bench space
- 2 way family bathroom with shower, separate bath, vanity cupboard with sliding door access from the main bedroom
- Separate toilet and laundry areas



Ivan Chua
07 3521 5478

[For full version visit the website](https://www.eresidential.com.au)



32 Sundowner Street **REGENTS PARK**

3 | 1 | 2 | 125m²

All dimensions are approximate; they are subject to errors and inaccuracies and no liability will be accepted. Plans are shown for marketing purposes only.

eresidential
honesty, integrity, family.