



5 Optus Place Edens Landing QLD

4 3 3

Ideally situated on a quiet location in the highly sought-after suburb of Edens Landing, you will find this charming, huge family home with a flexible, free-flowing floor plan, a practical modern kitchen, open plan living and dining areas, and a great size yard.

Land Size : 671 sqm
View : <https://www.eresidential.com.au/7806181>

Space is in abundance here both inside and out with outstanding views of the surrounding suburbs and mountains.




Property features include:

- ? 4 generous-sized bedrooms
- ? 3 well-maintained bathrooms
- ? Huge lounge area/family room with air conditioner
- ? 2nd living area upstairs
- ? Large kitchen with pantry and adjoining dining area
- ? Separate laundry area



Ivan Chua
0451 890 772

5 Optus Place, Edens Landing

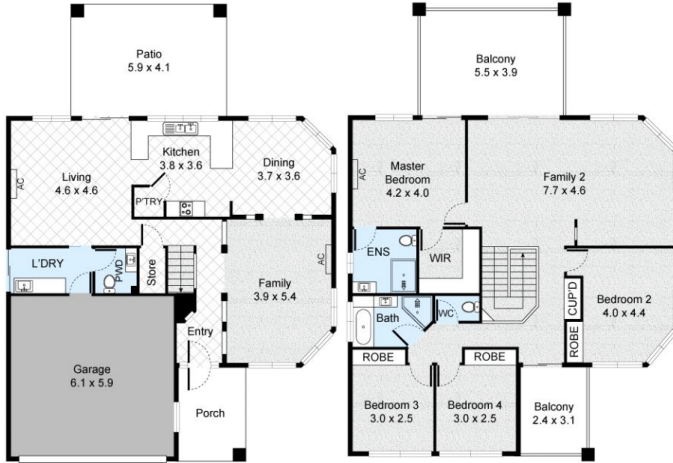
 4 Bed
  2.5 Bath
  2 Car



LEGEND

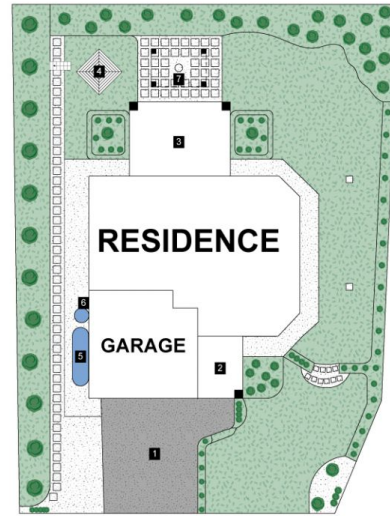
1. Driveway
2. Porch
3. Patio
4. Clothes Line
5. Water Tank
6. Hot Water Tank
7. Outdoor Seating

Internal : 257m²
 External : 55m²



GROUND FLOOR

FIRST FLOOR



SITE PLAN

