



57B Grove Road Edens Landing QLD

3 2 2

The well presented brick and tile home has been well cared for. This is a dual living home and will be rented separately.

View : <https://www.eresidential.com.au/7806173>

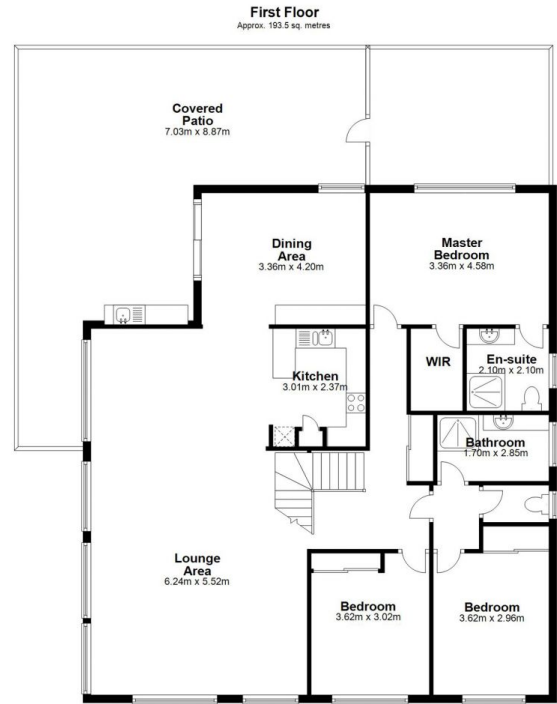
Features:

- 1 large bedroom with ensuite.
- 2 separate bedrooms & 1 bathroom
- Car port and caravan port
- Kitchenette
- 1 porch and 1 storage

Situated within walking distance to Edens Landing State School, train station, shops and public transport. Minutes to M1 and midway between Brisbane CBD & Gold Coast.



Ivan Chua
07 3521 5478



57 Grove Road, Edens Landing, Qld 4207

Dimensions are approximate & therefore should only be used for illustrative purposes.

Total area: approx. 347.2 sq. metres