



2 Oban Court Eagleby QLD

3 1 1

This welcoming family home is move-in ready with 3 sizeable bedrooms, two-ways bathrooms, single garage, spacious living room and a fantastic outdoor area for entertaining, all set on a 700m2 block that is central to shops, schools and public transport.

A covered patio leading off the dining space is ideal for hosting gatherings all year round with a commanding view of the fully fenced backyard. Three carpeted bedrooms all boast built-in robes plus ceiling fans, while the master features access to bathroom and extra large wardrobe.

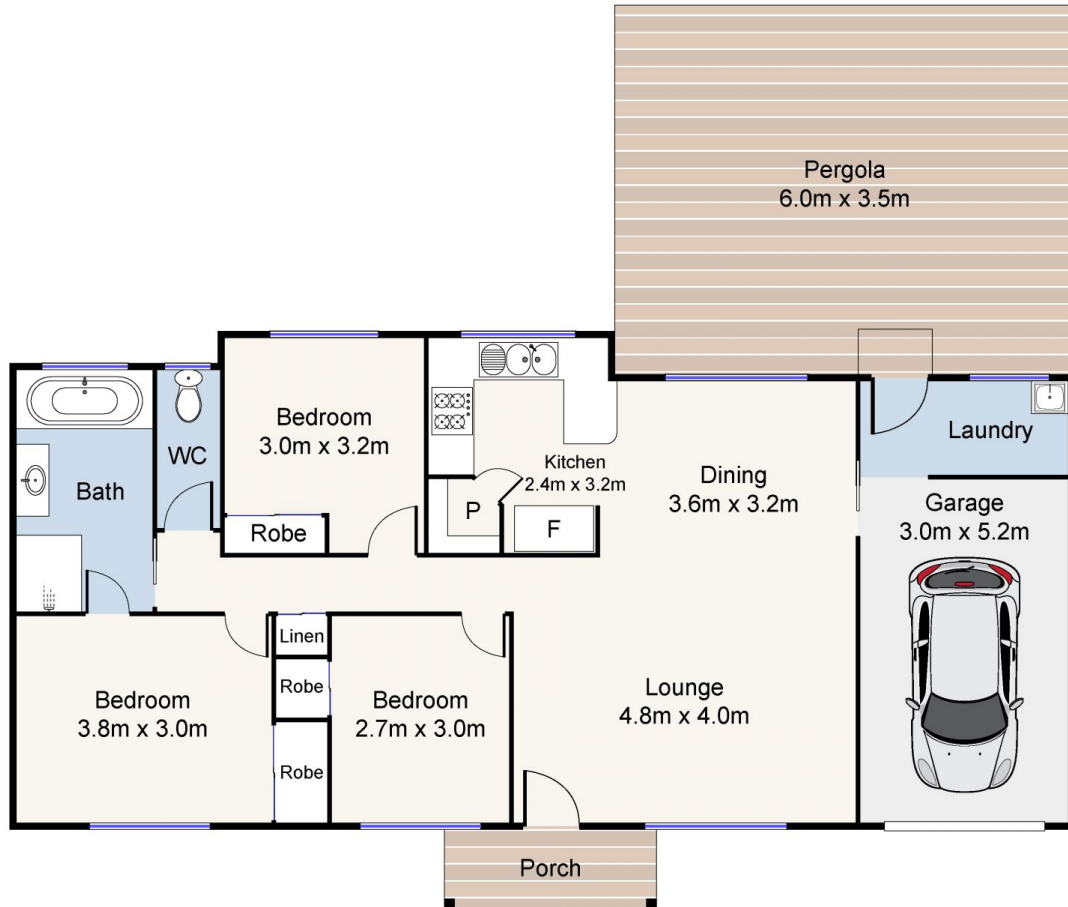
Located within a five minute drive to shops and numerous schools, the home also has quick access to the M1. This is the total package for families!

Features:

Building Size : 130 sqm
Land Size : 700 sqm
View : <https://www.eresidential.com.au/780615>
1



Ivan Chua
07 3521 5478



0 1 2 3 4 5

Scale in meters. Indicative only. Dimensions are approximate. All Information contained herein is gathered from sources we believe to be reliable. However, we cannot guarantee its accuracy and interested persons should rely on their own enquiries.

INT: 101 m²
EXT: 24 m²

eresidential

2 Oban Court, Eagleby

Produced by **Open2view.com**