



1101/275 Wickham Street FORTITUDE VALLEY QLD

1 1 1

Central location, near new apartment with loads of facilities.

This apartment is located near the heart of Fortitude Valley and only short distance to Brisbane CBD. Only walk distance from Emporium, James Street Market Precinct, The Gas Works and many more. Located close enough to the heart of the entertainment district of Fortitude Valley, yet still far enough to give you a quiet lifestyle.

Offering an extra study and balcony which can be enclosed to enlarge your living space if need to, or even make it a sunroom.

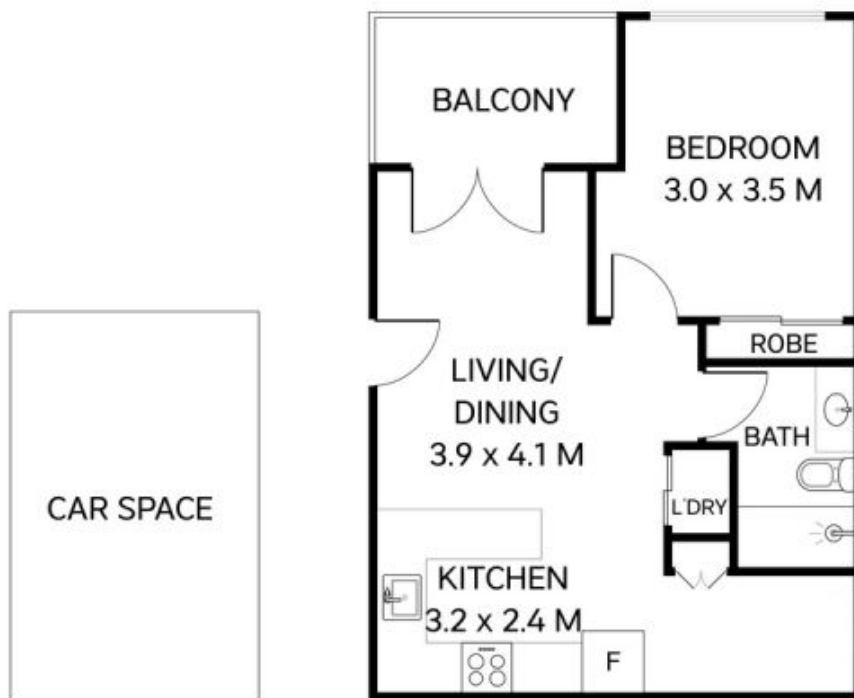
Apartment features include:
- Spacious bedrooms with built-ins

[For full version visit the website](https://www.eresidential.com.au/780613)

Type : Unit
Building Size : 6 sqm
View : <https://www.eresidential.com.au/780613>
1



Welly Cendana
07 3521 5478



TOTAL: 60 m²

1101/275 Wickham Street
Fortitude Valley



This plan is for representational purposes only. All dimensions are approximate and shouldn't be solely relied upon.
Floorplan created by **Vue Digital**