



801/222 Margaret Street BRISBANE CITY QLD

2 2 1

Don't miss out!!!

This is one of the very few unit with the extra large door, support handle and all for person with special needs, which also mean extra feature for someone don't need them.

Located in the heart of the city with the region 's best dining and retail precincts just walking distance, this spacious apartment offers ultimate City Lifestyle with lots of convenient.

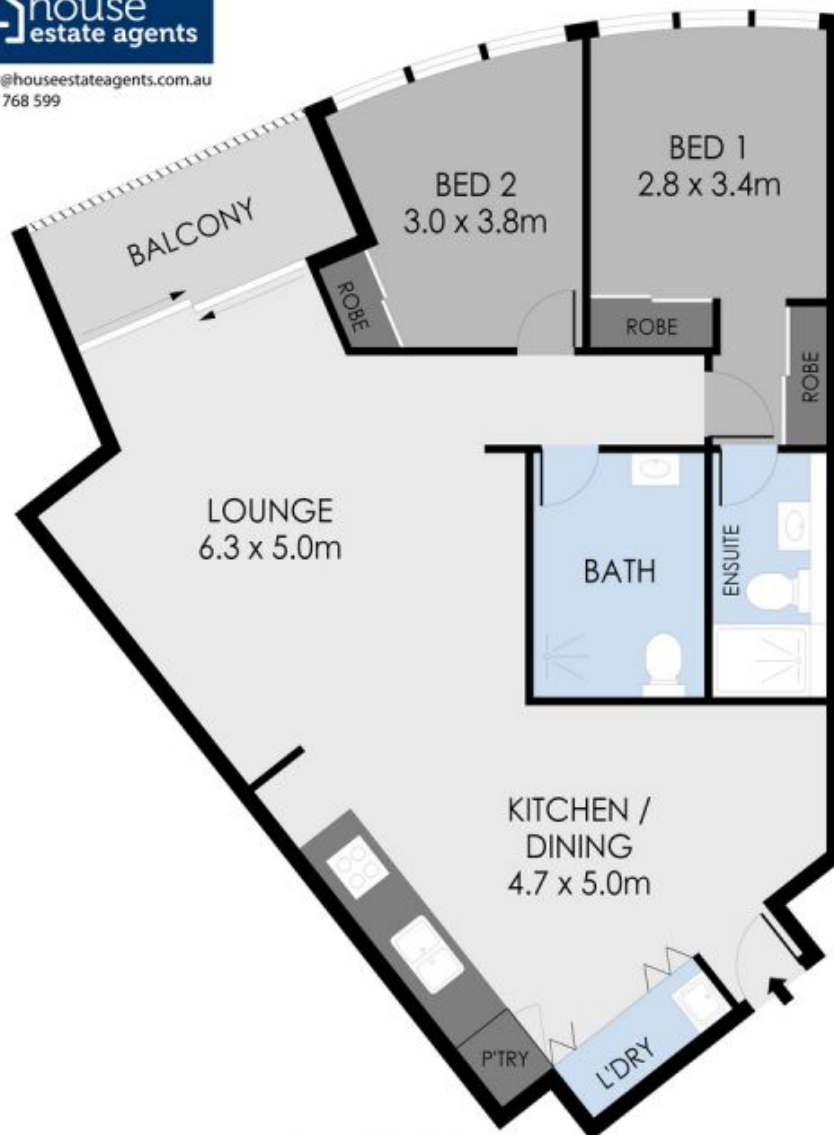
This apartment has all what you nee for comfortable living. You just need to bring your own furniture and enjoy your living in one of the most luxurious apartment in Brisbane CBD.

Type : Unit
Building Size : 11 sqm
View : <https://www.eresidential.com.au/7806124>



Jessica Untardi
07 3521 5478

[For full version visit the website](https://www.eresidential.com.au)



Level Eight

Internal Area : 88m²



Scale in metres, indicative only. Dimensions are approximate. All information contained herein is gathered from sources we believe to be reliable. However we cannot guarantee its accuracy and interested parties should rely on their own enquiries.

801/222 Margaret Street, Brisbane