



## 11 Kilkivan Parade Waterford QLD

3 2 1

Positioned in a quiet, leafy street, this family home offers a carefree lifestyle with a modern kitchen, open plan living area, and a low maintenance grassed backyard located close to shops, parks and within a short drive from major amenities.

As you approach the property, you will appreciate the lovely family friendly neighbourhood with quality homes and established trees and gardens. Inside, the spacious living area is light and airy with cool neutral colours and plenty of natural light.

Entertaining family and friends is easy with the living space flowing out onto the private front courtyard as well as the fully fenced grassed yard. All of the bedrooms have built in

[For full version visit the website](https://www.eresidential.com.au/7806067)

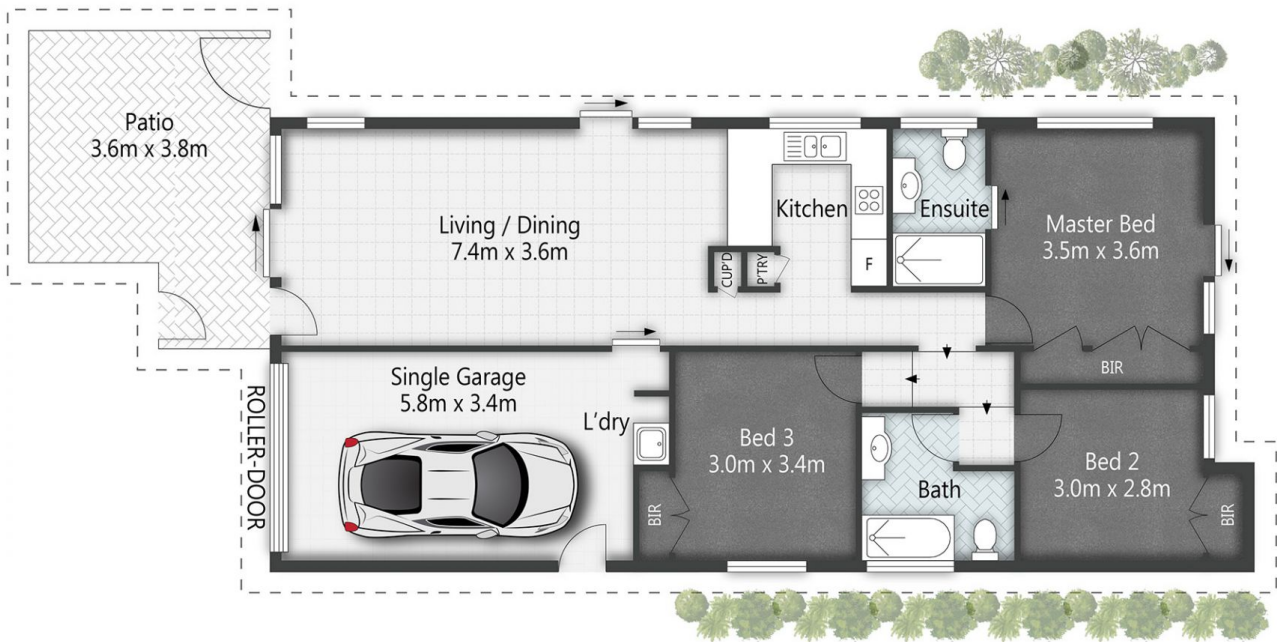
**Type** : House  
**Price** : \$ 540,000  
**Building Size** : 130 sqm  
**Land Size** : 253 sqm  
**View** : <https://www.eresidential.com.au/7806067>



**Robby Christanto**  
07 3521 5478



**Welly Cendana**  
07 3521 5478



11 Kilkivan Parade **WATERFORD**

3 | 2 | 1 | 130m<sup>2</sup>

All dimensions are approximate; they are subject to errors and inaccuracies and no liability will be accepted.  
Plans are shown for marketing purposes only.

**eresidential**  
honesty, integrity, family.