



32 Sundowner Street Regents Park QLD

3 1 3

Owner occupiers and investors alike will be impressed by this well designed, north facing, 3 bedroom home. Situate on an elevated 603m2 block with picturesque, low maintenance gardens, it is located within reasonable proximity to major shops, schools, public transport and parklands.

Price : \$ 564,900
Building Size : 125 sqm
Land Size : 603 sqm
View : <https://www.eresidential.com.au/7806058>

Features:

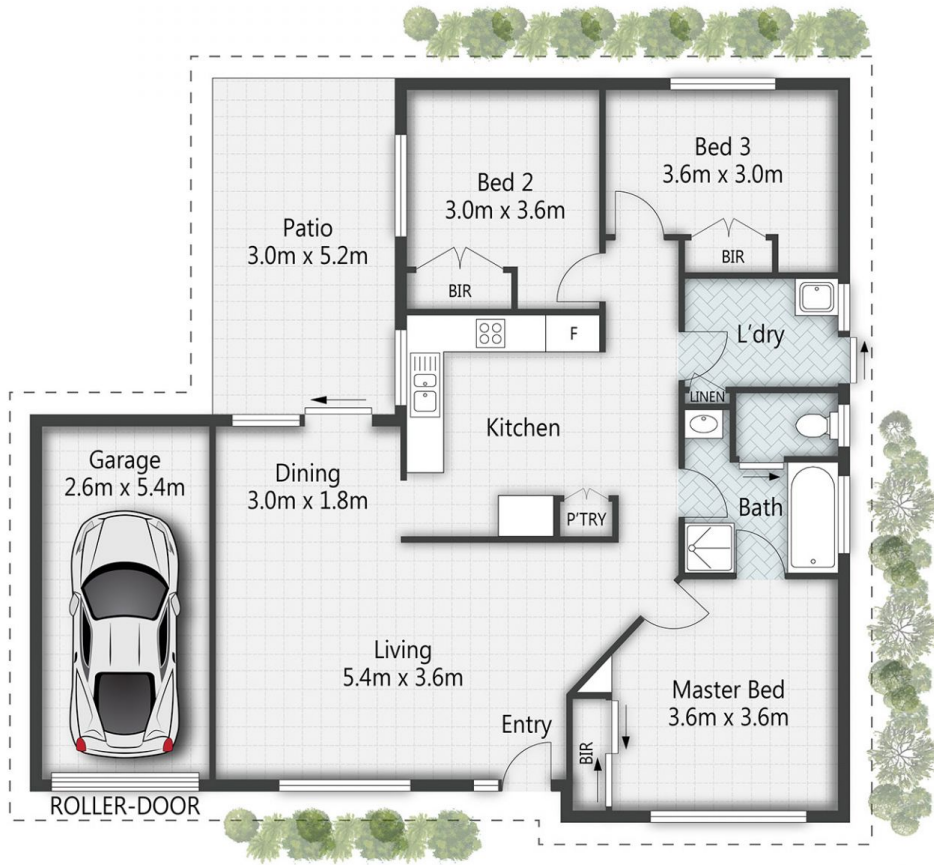
- Well sized open lounge/dining areas
- 3 bedrooms
- Master bedroom having built-in wardrobes
- 2 bedrooms with freestanding wardrobes
- Spacious kitchen with double door pantry, electric stove, large fridge space, ample cupboard and bench space
- 2 way family bathroom with shower, separate bath, vanity cupboard with sliding door access from the main bedroom



Welly Cendana
07 3521 5478



Peter Palmer
07 3521 5478



32 Sundowner Street **REGENTS PARK**

3 | 1 | 2 | 125m²

All dimensions are approximate; they are subject to errors and inaccuracies and no liability will be accepted. Plans are shown for marketing purposes only.

eresidential
honesty, integrity, family.