

21 Valerie Close Edens Landing QLD

4 2 2

Sitting in an elevated position, this large family home on a private 733m² block offers beautiful views and plenty of space with two large living areas, room for the home gym, and modern kitchen, located close to shops and schools and backing onto Chatfield Park.

You'll appreciate the sense of serenity the home offers thanks to its quiet location and lush views from the large windows throughout the living room. Whether you're hosting a party of six or 16, you won't be short on space to entertain with the huge living room flowing into the dining and kitchen area.

Extending from the dining space, the covered outdoor deck is the perfect place to relax with family and friends or enjoy

[For full version visit the website](https://www.eresidential.com.au/780605)

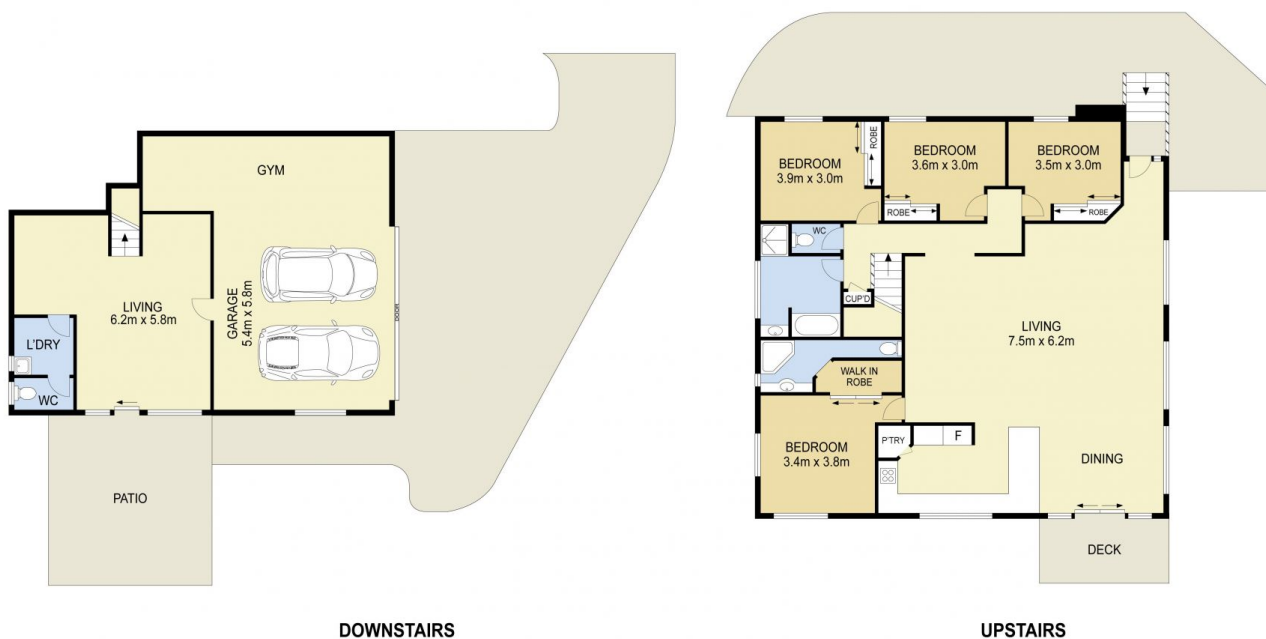
Type : House
Price : \$ 680,888
Building Size : 320 sqm
Land Size : 733 sqm
View : <https://www.eresidential.com.au/780605>
3



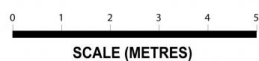
Robby Christanto
07 3521 5478



Welly Cendana
07 3521 5478



21 Valerie Close, Edens Landing



INTERNAL AREA: 240 m²
EXTERNAL AREA: 80 m²

Scale in metres. Indicative only. All information contained here in obtained from sources we believe to be accurate. We cannot guarantee it's accuracy. Interested persons should make and rely on their own enquiries