



61 Grove Road Edens Landing QLD

5 🛏 3 🚿 4 🚗

Set on a 700m2 block, this dual living property with a three-bedroom family home and a two-bedroom granny flat, is ideal for those looking for an additional income stream or to suit generational living, close to local shops, schools and public transport.

Set in an elevated position, the main home is situated on the second storey which not only gives privacy from the granny flat on the level below, it allows direct access to the large backyard and outdoor patio as well as offering beautiful leafy views to the south through large windows.

Spacious and filled with natural light, the combined living and dining area will make entertaining a delight whatever the weather, and with the modern kitchen connected to the dining room, the layout would suit the busy family lifestyle.

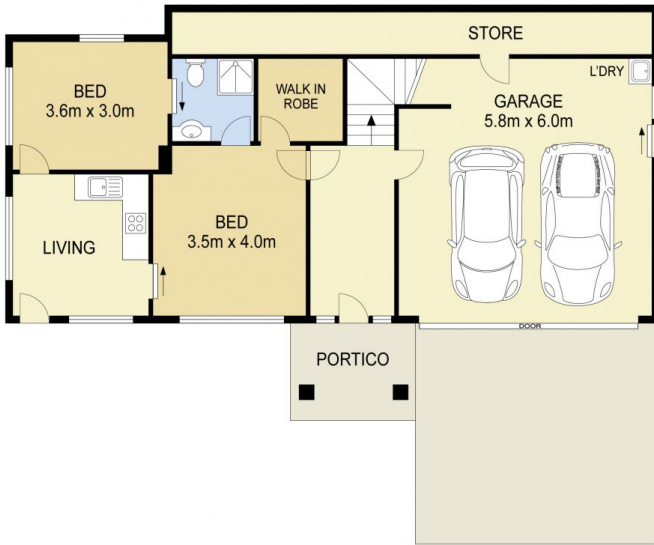
Price : \$ 780,000
Building Size : 265 sqm
Land Size : 700 sqm
View : <https://www.eresidential.com.au/7806052>



Robby Christanto
07 3521 5478



Welly Cendana
07 3521 5478

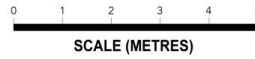


DOWNSTAIRS



UPSTAIRS

61 Grove Road, Edens Landing



INTERNAL AREA: 220 m²
EXTERNAL AREA: 45 m²

Scale in meters. Indicative only. All information contained here is obtained from sources we believe to be accurate. We cannot guarantee its accuracy. Interested persons should make and rely on their own enquiries