



103 Castile Crescent Edens Landing QLD

4 2 4

Set on a generous 873m2 block, this former display home has everything a family could wish for with multiple living areas, loads of storage, huge outdoor entertaining area, fresh finishes, and all within five minutes to local shops, public transport, and schools.

You'll appreciate the attention to detail this property offers, designed to suit the modern family lifestyle by offering four generous bedrooms with built-in robes, two bathrooms, a formal living room plus an open plan living, dining and kitchen area and the flexibility to use the garage as a multipurpose space.

Recently updated with new paint, ducted air-conditioning and carpets, the home has been thoughtfully finished to ensure nothing needs to be done except to move in and enjoy. With an epoxy finish on the garage floor, the

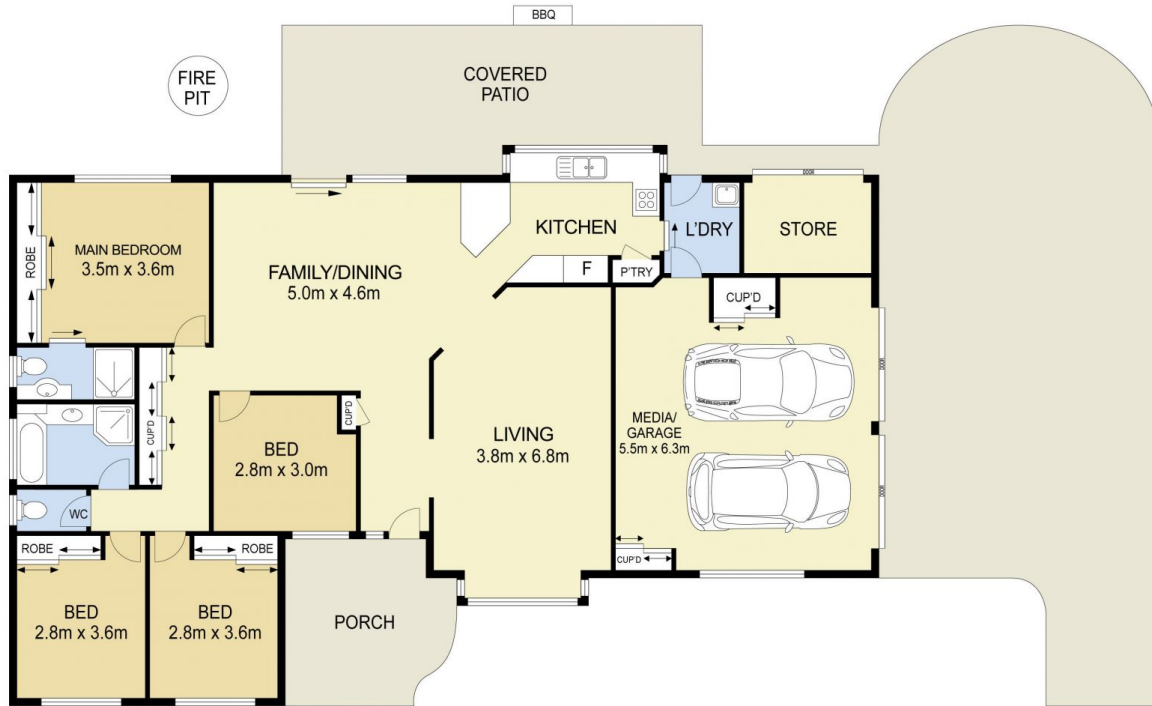
Price : \$ 755,000
Land Size : 873 sqm
View : <https://www.eresidential.com.au/7806045>



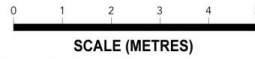
Robby Christanto
07 3521 5478



Welly Cendana
07 3521 5478



103 Castile Crescent, Edens Landing



INTERNAL AREA: 180 m²
EXTERNAL AREA: 100 m²

Scale in meters. Indicative only. All information contained here is obtained from sources we believe to be accurate. We cannot guarantee its accuracy. Interested persons should make and rely on their own enquiries