



30 Kummara Road Edens Landing QLD

3 2 2

This recently updated family home is move-in ready with fresh paint throughout, modern finishings, a functional floor plan, tranquil leafy view, and a massive backyard perfect for the kids and pets to play set on a 735m2 block.

With the home backing onto the Overland Reserve, you'll appreciate the serene outlook and privacy the home offers with established gardens and fewer neighbours, and with three bedrooms, two bathrooms, one car garage plus extra off-street parking, this home is ready to be enjoyed.

From the moment you step inside, you'll appreciate how the combined living, dining and kitchen area has been designed to ensure each zone flows perfectly to the next, providing the ideal lifestyle for families. Each of the bedrooms are complete built-in robes, ceiling fans and quality blinds while the master bedroom boasts an ensuite

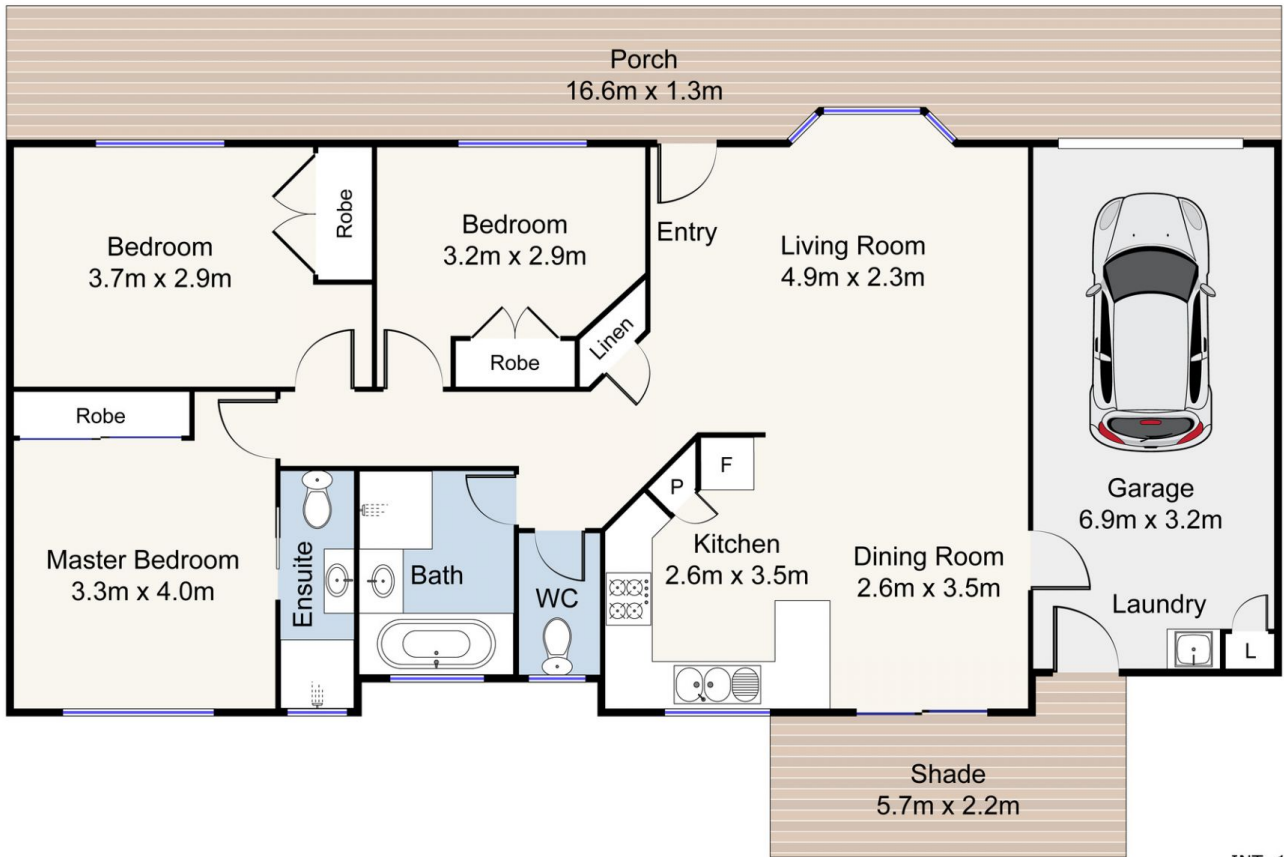
Price : \$ 530,000
Building Size : 157 sqm
Land Size : 735 sqm
View : <https://www.eresidential.com.au/7806036>



Robby Christanto
07 3521 5478



Welly Cendana
07 3521 5478



Scale in meters. Indicative only. Dimensions are approximate. All Information contained herein is gathered from sources we believe to be reliable. However, we cannot guarantee its accuracy and interested persons should rely on their own enquiries.

INT: 123 m²
EXT: 34 m²

Produced by Open2view.com



30 Kummara Road, Edens Landing