



## 50 Lillydale Street Carseldine QLD

4 2 4

This impeccable home really does present as new, and is situated on a lovely tree lined street in a quiet picturesque area.

Upon entry, you will immediately be taken by the cathedral ceiling and open plan living areas. From the large media room to the spacious lounge, separate dining area and stand alone kitchen bench, you will be impressed with the modern design and functionality.

The 4 well sized bedrooms each host separate air conditioning units, as do the lounge, dining and media areas. The large master bedroom opens onto the back patio, and has an ensuite featuring quality finishes as does the main bathroom. All bedrooms have built-in wardrobes

**Type** : House  
**Price** : \$ 945,000  
**Building Size** : 313 sqm  
**Land Size** : 850 sqm  
**View** : <https://www.eresidential.com.au/780603>  
5

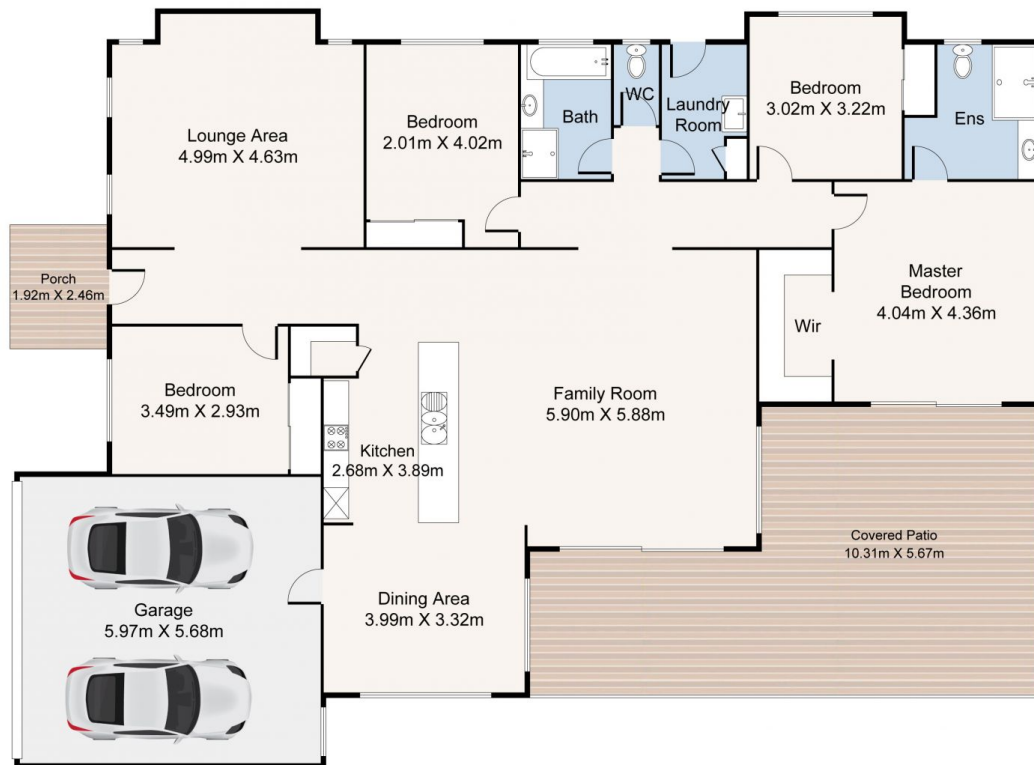


**Welly Cendana**  
07 3521 5478



**Peter Palmer**  
07 3521 5478

[For full version visit the website](https://www.eresidential.com.au)



0 1 2 3 4 5

Scale in meters. Indicative only. Dimensions are approximate. All Information contained herein is gathered from sources we believe to be reliable. However, we cannot guarantee its accuracy and interested persons should rely on their own enquiries.

INT: 263m<sup>2</sup>

EXT: 49m<sup>2</sup>

**eresidential**

50 Lillydale Street, Carseldine