

16 Mount Archer Road Park Ridge QLD

4 2 2

Relaxed way of life - and what an investment opportunity!!

This stylish home is 6 years young and is situated on a 329m² CORNER block in the very highly sought after Park Ridge "Rise" estate. It is positioned virtually opposite a large park/playground and is only a short drive to the Park Ridge Town Centre, and the NEW Woolworths shopping centre presently under construction. Further, it is in close proximity to schools, shops and transport, whilst the Logan and Gateway Motorways are also within reach and provide easy access to the CBD, Gold Coast, Sunshine Coast and Toowoomba.

You will be impressed with the elongated design which, to enhance PRIVACY, features 4 well sized bedrooms, none of which have common walls.

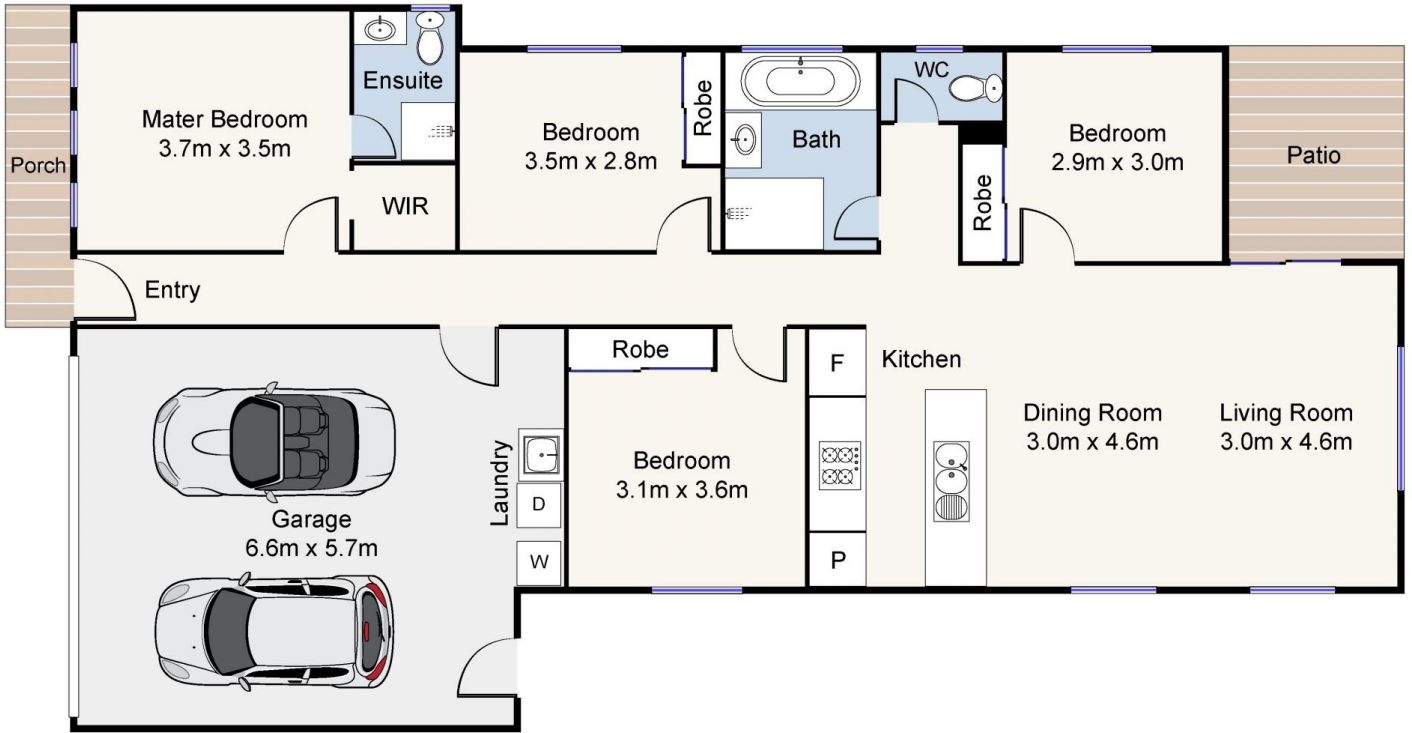
Price : \$ 550,000
Building Size : 175 sqm
Land Size : 329 sqm
View : <https://www.eresidential.com.au/780603>
2



Welly Cendana
07 3521 5478



Peter Palmer
07 3521 5478



0 1 2 3 4 5

Scale in meters. Indicative only. Dimensions are approximate. All Information contained herein is gathered from sources we believe to be reliable. However, we cannot guarantee its accuracy and interested persons should rely on their own enquiries.

INT: 158 m²
EXT: 9 m²

Produced by Open2view.com

eresidential

16 Mount Archer Road, Park Ridge