



54 Wantana Crescent Edens Landing QLD

4 2 6

This wonderful home is warm and inviting with leafy elevated views, room for all the toys, and more than enough space for the whole family, set on an 892m2 block in a sought after neighbourhood and within an easy commute from the city.

The main lounge and dining area is spacious and light filled, ideal for modern family living with quality features such as timber flooring, skylights, and a fireplace. The kitchen is centrally positioned with timber cabinetry and oodles of storage which flows into the second living space with access straight out onto the large patio.

When everyone is looking for more outdoor space, this property does not disappoint. The private backyard offers a covered outdoor entertaining area with a tranquil leafy view, grassed space for the kids and pets to play, and

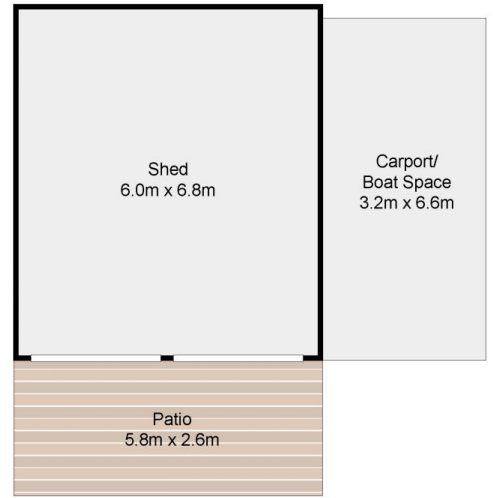
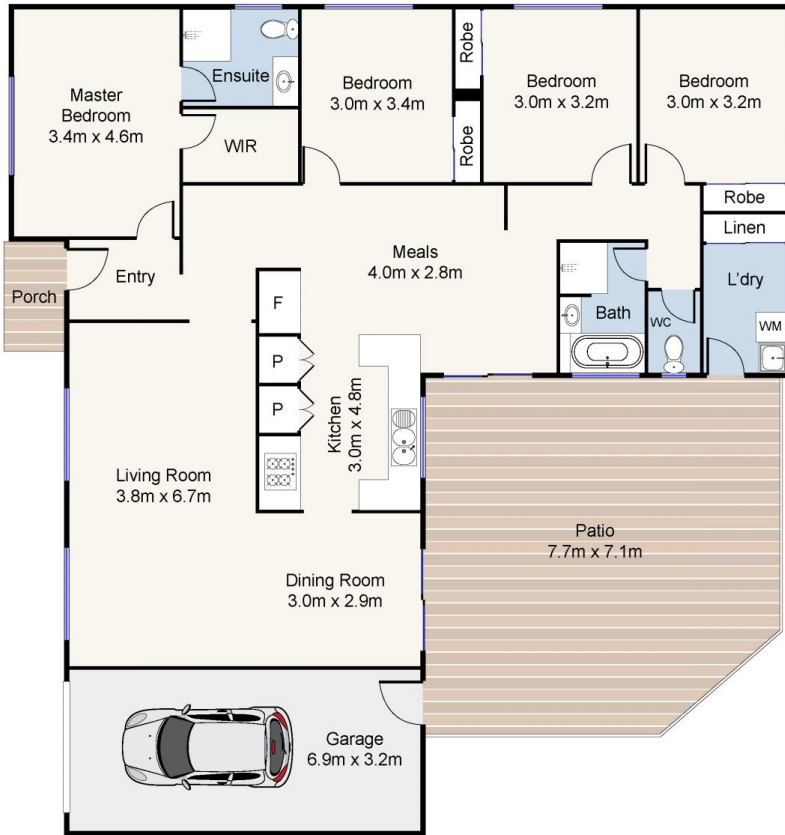
Price : \$ 730,000
Building Size : 316 sqm
Land Size : 892 sqm
View : <https://www.eresidential.com.au/7806029>



Robby Christanto
07 3521 5478



Welly Cendana
07 3521 5478



Scale in meters. Indicative only. Dimensions are approximate. All Information contained herein is gathered from sources we believe to be reliable. However, we cannot guarantee its accuracy and interested persons should rely on their own enquiries.

INT: 181 m²
EXT: 135 m²

Produced by Open2view.com



54 Wantana Crescent, Edens Landing