



## 60 Grove Road Edens Landing QLD

4 2 2

This spacious family home is move-in ready with four large bedrooms, two bathrooms, double garage, two living spaces and a fantastic outdoor deck for entertaining, all set on a 651m2 block that is central to shops, schools and public transport.

From the moment you enter the front door, you'll appreciate the functional floor plan that has been designed for families wanting more space. A carpeted media room provides an additional living area while the hub of the home, the combined living, dining and kitchen zone, is bathed in natural sunlight thanks to the large windows.

A covered deck leading off the dining space is ideal for hosting gatherings all year round with a commanding view

**Type** : House  
**Price** : \$ 620,000  
**Land Size** : 651 sqm  
**View** : <https://www.eresidential.com.au/7806028>

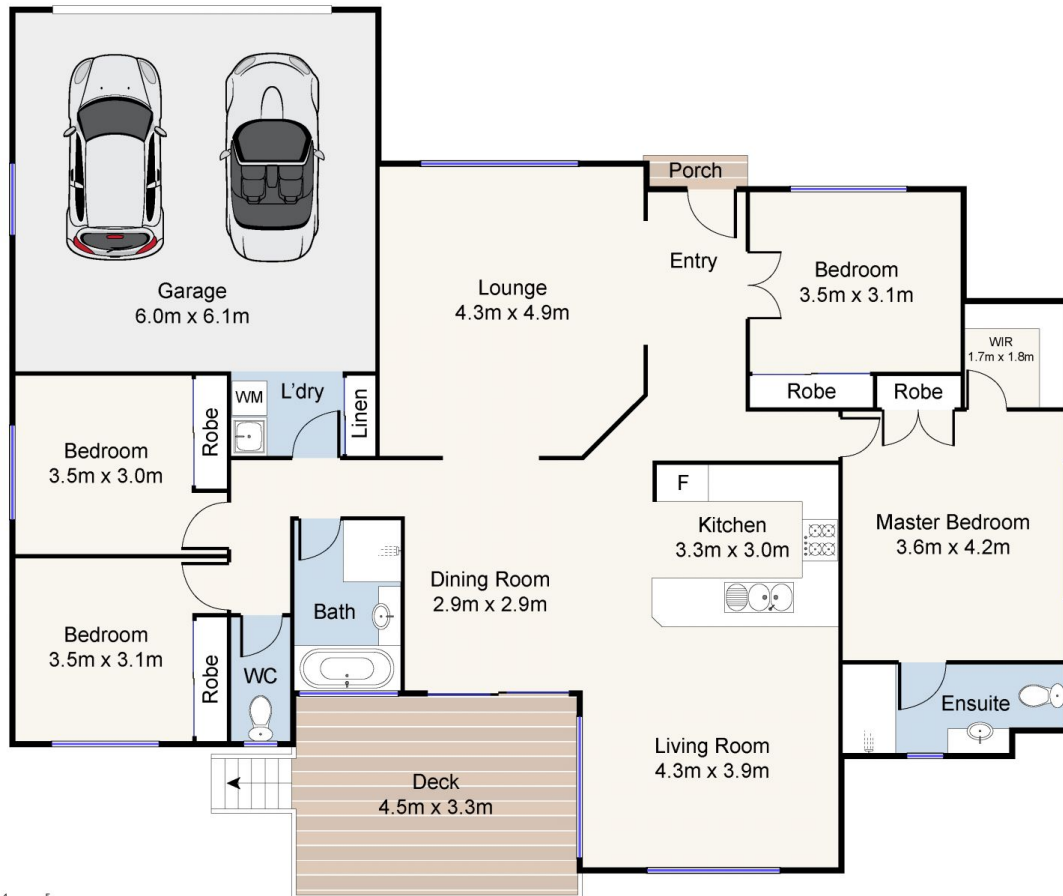


**Robby Christanto**  
07 3521 5478



**Welly Cendana**  
07 3521 5478

[For full version visit the website](https://www.eresidential.com.au)



INT: 188 m<sup>2</sup>  
EXT: 16.5 m<sup>2</sup>

Scale in meters. Indicative only. Dimensions are approximate. All Information contained herein is gathered from sources we believe to be reliable. However, we cannot guarantee its accuracy and interested persons should rely on their own enquiries.



60 Grove Road, Edens Landing

Produced by [Open2view.com](https://open2view.com)