



705/66 Manning Street SOUTH BRISBANE QLD

2 2 1

Walking distance to CBD, South Bank and Convention Centre.

This stylish apartment is located one block from the Brisbane Convention Centre and a short walk to South Bank precinct, Brisbane CBD and within the Brisbane State High School catchment zone. This property ticks all the boxes for an easy lifestyle!

This generous two bedroom apartment offers stylish finishes throughout with views of adjacent parkland as well as stunning Brisbane CBD city views and glance of West End.

Rental is \$500/week (unit+carpark)

[For full version visit the website](https://www.eresidential.com.au/7805930)

Type : Unit

View : <https://www.eresidential.com.au/7805930>



Welly Cendana
07 3521 5478



TYPE B06

Levels 4 - 11

Two bedrooms

Two bathrooms

Study nook

Fully equipped kitchen

Balcony with sliding doors

Concealed air-conditioning



Apartment 405:

Internal Area 63m²

Balcony 30m²

Total area 93m²

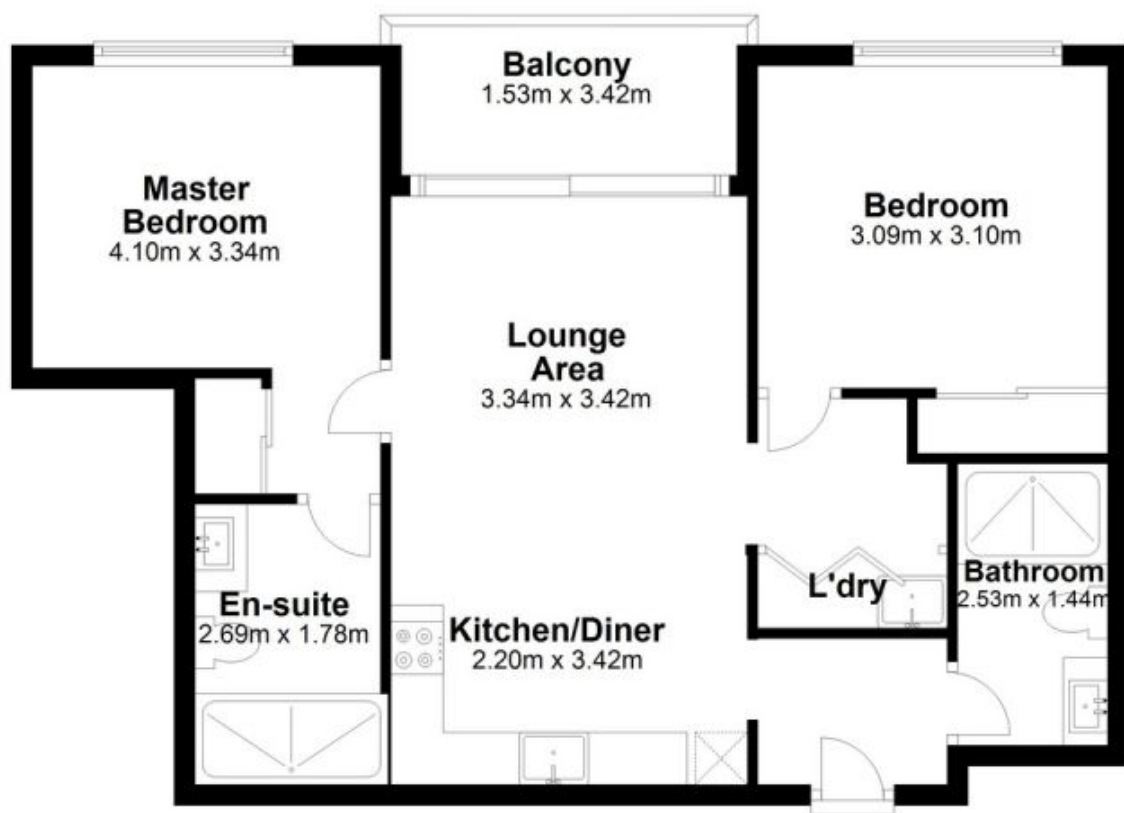
Apartment 505, 605, 705,

805, 905, 1005, 1105:

Internal Area 63m²

Balcony 7m²

Total area 70m²



Unit 705, 66 Manning Street, South Brisbane, Qld 4101

Dimensions are approximate & therefore should only be used for illustrative purposes.

Total area: approx. 59.4 sq. metres