



9 Lexey Street WAKERLEY QLD

4 2 2

Near new modern family home in a Brisbane's fast-growing suburb so close to shopping centres, schools, parks and major amenities. Situated only 4 minutes to Mayfair Village Shopping Centre, within 30 minutes to all the Brisbane's attraction including CBD, South bank, Kangaroo point, only 17 minutes to Brisbane Airport and 10 minutes to Manly beach.

Type : House
Land Size : 401 sqm
View : <https://www.eresidential.com.au/7805887>

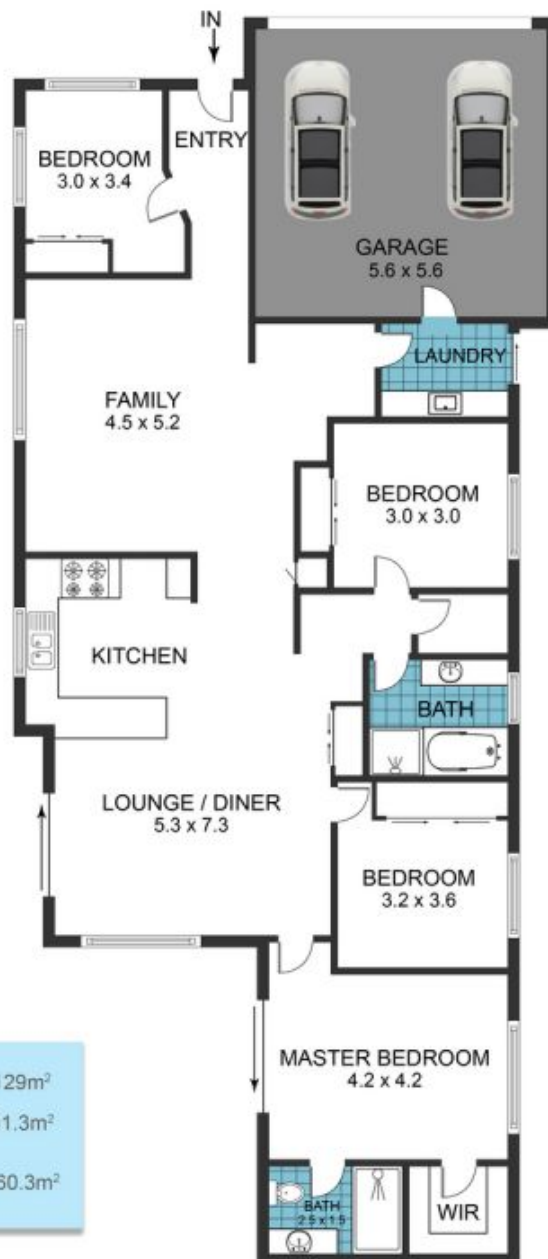
Featuring a spacious open plan living at the heart of the home with a separate media room great or a kid's playroom. The modern kitchen is equipped with a dishwasher, stone bench top, electric cooktop and oven and offers plenty of storage. Offering four bedrooms, three of which feature built-in wardrobes, ceiling fans and are centrally located to the main bathroom whilst the main

[For full version visit the website](https://www.eresidential.com.au/7805887)

4 Bed

2 Bath

2 Car



This plan is for illustrative purposes only and should only be used as such by any prospective purchaser.

www.blusky.media
Consider It sold!